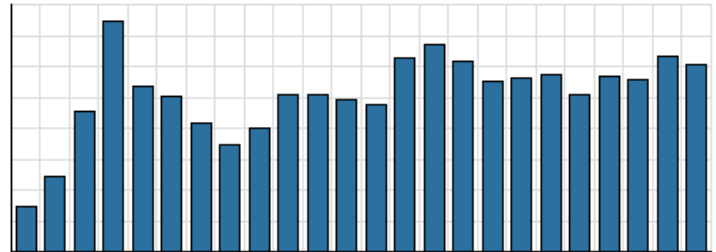


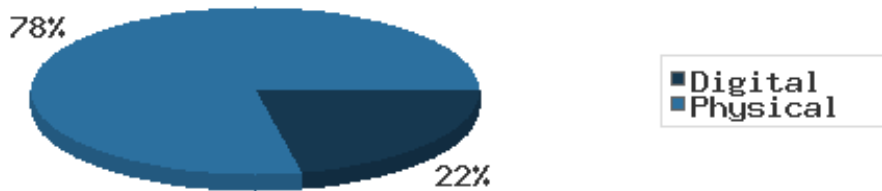
Monthly Stats Brief Narrative

Through April 2022, the number of patrons entering our buildings greatly increased system-wide compared to this same time year-to-date the previous year. Combined physical and digital use of library materials increased year-to-date compared to 2021. About 12% of our registered cardholders checked out a physical item this past month, while about 4% of registered cardholders checked out a digital item.

District Total Checkouts Over 24 Months



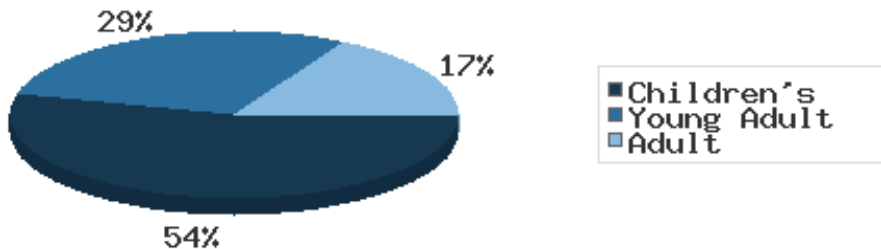
Digital vs. Physical Circulation YTD



Digital usage has comprised about 22% of total materials use year-to-date through April 2022, and digital usage somewhat decreased from this time in 2021.

In April 2022, BDL patrons saved \$103,298.10 by checking out 9,613 physical items from the library. Our programming for all ages and our digital services further increase the library's value to the community, bringing the total estimated value to \$129,883.36.

Programs Offered in 2022 YTD



Compared to this time year-to-date 2021, the number of programs BDL offered has greatly increased. Attendance at programs decreased over this same period.

See the full statistical report, starting on the next page, for details and more graphs. The most up-to-date stats are always available online and interactive at <https://www.BranchDistrictLibrary.org/stats>.

Attendance

April 2022

	BDL Monthly Total	BDL YTD	BDL Year End (Year-over-Year Change)				
			2021	2020	2019	2018	2017
Attendance	8,105	28,753 (+91%)	76,553 (+21%)	63,336 (-66%)	183,677 (-4%)	191,866 (-1%)	193,922 (-4%)
Curbside Service Uses (Tracking since 2020)	11	53	14	0	0	0	0
Hours Open	1,026.00	3,676.50 (+25%)	10,569.00 (+48%)	7,132.50 (-37%)	11,250.25 (-9%)	12,387.00 (+14%)	10,869.15 (0%)
Number of Hours Scheduled Open Each Week (Tracking Since 1/2018)	239.00		239.00 (+1%)	237.00 (-2%)	241.00 (-2%)	245.00	0.00

Patrons

April 2022

	BDL Monthly Total	BDL YTD	BDL Year End (Year-over-Year Change)				
			2021	2020	2019	2018	2017
Population in our Service Area (Tracking Since 2018)	46,464	46,088 (avg) (+2%)	44,996 (avg) (+0%)	44,931 (avg) (0%)	45,093 (avg) (0%)	45,113 (avg)	0 (avg)
Library Card Holders	14,336	18,566 (avg) (-16%)	22,337 (avg) (+5%)	21,365 (avg) (+4%)	20,493 (avg) (-4%)	21,350 (avg) (-16%)	25,346 (avg) (+3%)
Patrons Who Checked Out a Physical Item	1,708	1,605 (avg) (+44%)	1,359 (avg) (+23%)	1,102 (avg) (-48%)	2,136 (avg) (-2%)	2,180 (avg) (-5%)	2,305 (avg) (-1%)
New Library Card Holders Added	96	277 (+125%)	732 (-44%)	1,304 (+111%)	618 (-39%)	1,021 (+21%)	844 (-15%)
In-House Holds Filled for Our Library Card Holders	872	3,733 (-14%)	10,696 (+13%)	9,467 (-10%)	10,527 (-4%)	10,987 (-6%)	11,650 (+12%)
Active Hoopla Users	303	292 (avg) (-5%)	291 (avg) (-10%)	322 (avg) (+11%)	290 (avg) (+14%)	255 (avg) (+50%)	170 (avg) (+92%)
Active OverDrive Users	255	249 (avg) (+10%)	223 (avg) (-5%)	234 (avg) (+10%)	213 (avg) (+18%)	180 (avg) (+27%)	143 (avg) (-1%)

Physical Collection

Tracking Item-Type Breakdown Since 8/2017

April 2022

	BDL Monthly Total	BDL YTD	BDL Year End (Year-over-Year Change)				
			2021	2020	2019	2018	2017
Physical Books and All other Print Materials in the Catalog	91,701		91,417 (+0%)	91,278 (-8%)	98,689 (-2%)	100,253 (0%)	100,293
Physical Audiobooks in the Catalog	1,985		1,875 (-4%)	1,949 (+9%)	1,783 (-5%)	1,881 (+2%)	1,852
Physical Video Materials in the Catalog	11,905		11,646 (+3%)	11,352 (-1%)	11,460 (+8%)	10,579 (+1%)	10,519
Physical Music Recordings in the Catalog	26		42 (-76%)	178 (+12%)	159 (-53%)	337 (-2%)	345
TOTAL Physical Items in the Catalog	105,633		104,980 (0%)	105,257 (-6%)	112,053 (-1%)	113,050 (+0%)	113,009 (-11%)

Digital Collection

Tracking Since 8/2017

April 2022

	BDL Monthly Total	BDL YTD	BDL Year End (Year-over-Year Change)				
			2021	2020	2019	2018	2017
Ebooks in All Digital Collections	675,745		648,146 (+35%)	480,691 (+30%)	370,666 (+21%)	306,595 (+33%)	230,178
Audiobooks in All Digital Collections	168,209		162,946 (+26%)	128,892 (+50%)	86,004 (+19%)	71,995 (+36%)	52,833
Video Materials in All Digital Collections	23,648		22,520 (+27%)	17,791 (+9%)	16,267 (+14%)	14,229 (-10%)	15,767
Music Recordings in All Digital Collections	20,431		21,347 (-92%)	273,294 (+1%)	271,614 (+13%)	239,705 (-14%)	280,259
Periodicals in All Digital Collections	4,086		3,881 (+6%)	3,668	0	0	0
TOTAL of All Digital Collections	892,119		858,840 (-5%)	904,336 (+21%)	744,551 (+18%)	632,524 (+9%)	579,037

Total Collection

Tracking Since 8/2017

April 2022

	BDL Monthly Total	BDL YTD	BDL Year End (Year-over-Year Change)				
			2021	2020	2019	2018	2017
Combined Physical Items	105,633		104,980 (0%)	105,257 (-6%)	112,053 (-1%)	113,050 (+0%)	113,009 (-11%)
Combined Digital Collections	892,119		858,840 (-5%)	904,336 (+21%)	744,551 (+18%)	632,524 (+9%)	579,037
TOTAL of all Collections	993,666		959,939 (-5%)	1,009,593 (+18%)	856,604 (+15%)	745,574 (+8%)	692,046 (+447%)

Use of Physical Items

April 2022

	BDL Monthly Total	BDL YTD	BDL Year End (Year-over-Year Change)				
			2021	2020	2019	2018	2017
Checkouts of Cataloged Items	6,900	26,685 (+42%)	68,460 (+31%)	52,227 (-53%)	110,285 (-3%)	113,128 (-6%)	120,916 (+2%)
Renewals of Cataloged Items	947	3,646 (+40%)	8,639 (+20%)	7,181 (-47%)	13,490 (-1%)	13,607 (-8%)	14,804 (-4%)
Items Used in the Library But Not Checked Out	616	1,746 (+54%)	2,350 (-63%)	6,404 (+54%)	4,166 (+49%)	2,803 (-8%)	3,050 (+126%)
Checkouts of Uncataloged Items	64	368 (+19%)	1,505 (+50%)	1,001 (-70%)	3,294 (-16%)	3,904 (+38%)	2,839 (-38%)
Requests from BDL Patrons for Items at Other MeLCat Libraries, Actually Fulfilled	591	2,293 (-6%)	6,981 (+52%)	4,599 (-53%)	9,873 (+1%)	9,777 (+20%)	8,169 (+15%)
Requests from Other MeLCat Libraries for Items at BDL, Actually Fulfilled	495	2,165 (+20%)	5,712 (+80%)	3,175 (-58%)	7,582 (-23%)	9,810 (+25%)	7,867 (+11%)
TOTAL Use of Physical Items	9,613	36,903 (+37%)	93,647 (+26%)	74,587 (-50%)	148,690 (-3%)	153,029 (-3%)	157,645 (+2%)

Use of Digital Resources

April 2022

	BDL Monthly Total	BDL YTD	BDL Year End (Year-over-Year Change)				
			2021	2020	2019	2018	2017
OverDrive Checkouts	1,133	4,625 (+7%)	13,294 (+2%)	13,051 (+21%)	10,822 (+14%)	9,501 (+21%)	7,823 (+4%)
Hoopla Checkouts	1,060	4,281 (-1%)	12,507 (-8%)	13,604 (+9%)	12,530 (-2%)	12,796 (+20%)	10,669 (+96%)
All Other Digital Services	265	1,454 (-33%)	10,131 (+42%)	7,140 (-33%)	10,604 (+11%)	9,572 (-72%)	34,047 (-46%)
TOTAL Use of Digital Resources	2,458	10,360 (-7%)	36,284 (+4%)	34,861 (+3%)	33,956 (+7%)	31,869 (-39%)	52,539 (-31%)

Total Item Usage

April 2022

	BDL Monthly Total	BDL YTD	BDL Year End (Year-over-Year Change)				
			2021	2020	2019	2018	2017
Combined Checkouts of Physical Items	9,613	36,903 (+37%)	93,647 (+26%)	74,587 (-50%)	148,690 (-3%)	153,029 (-3%)	157,645 (+2%)
Combined Use of Digital Resources	2,458	10,360 (-7%)	36,284 (+4%)	34,861 (+3%)	33,956 (+7%)	31,869 (-39%)	52,539 (-31%)
TOTAL Uses of All BDL Items	12,071	47,263 (+24%)	129,931 (+19%)	109,448 (-40%)	182,646 (-1%)	184,898 (-12%)	210,184 (-9%)

Cataloging

April 2022

	BDL Monthly Total	BDL YTD	BDL Year End (Year-over-Year Change)				
			2021	2020	2019	2018	2017
Physical Items Added to the Catalog	619	3,191 (-31%)	11,665 (+17%)	9,938 (+2%)	9,719 (-12%)	11,056 (+0%)	11,009 (-1%)
Physical Items Deleted from the Catalog	1,449	2,611 (-54%)	16,482 (-3%)	17,003 (+58%)	10,769 (-2%)	10,941 (-55%)	24,366 (+53%)

Reference Questions

April 2022

	BDL Monthly Total	BDL YTD	BDL Year End (Year-over-Year Change)				
			2021	2020	2019	2018	2017
General Reference Questions in Person	858	3,037 (+46%)	8,431 (+94%)	4,347 (-50%)	8,748 (+32%)	6,641 (-12%)	7,537 (+20%)
Questions via Telephone Calls	481	1,925 (-14%)	5,765 (+26%)	4,559 (+11%)	4,111 (+6%)	3,866 (-24%)	5,079 (+10%)
Reference Questions Delivered Online	17	76 (-45%)	275 (+13%)	243 (-14%)	281 (+85%)	152 (-35%)	233 (-23%)
In-Person Questions on Computer or Internet Use	360	1,206 (+31%)	3,675 (+33%)	2,767 (-63%)	7,505 (+6%)	7,068 (-3%)	7,285 (+11%)
In-Person Questions about Our Online Databases	9	27 (-46%)	142 (+33%)	107 (-69%)	349 (-15%)	409 (+13%)	363 (+114%)
In-Person Tax Form Questions	42	192 (-14%)	233 (-19%)	286 (-12%)	326 (-37%)	518 (+5%)	493 (+4%)
TOTAL of All Reference Questions	1,767	6,463 (+14%)	18,521 (+50%)	12,309 (-42%)	21,320 (+14%)	18,654 (-11%)	20,990 (+14%)

Notary Services

Began 9/2017

April 2022

	BDL Monthly Total	BDL YTD	BDL Year End (Year-over-Year Change)				
			2021	2020	2019	2018	2017
Patrons Who Used our Free Notary Services	10	33 (+313%)	69 (+50%)	46 (-52%)	95 (+44%)	66 (+371%)	14
Documents Notarized	16	47 (+571%)	112 (+107%)	54 (-56%)	124 (+85%)	67 (+253%)	19

MeLCat

April 2022

	BDL Monthly Total	BDL YTD	BDL Year End (Year-over-Year Change)				
			2021	2020	2019	2018	2017
Requests from BDL Patrons for Items at Other MeLCat Libraries	633	2,403 (-7%)	7,375 (+47%)	5,026 (-52%)	10,538 (+1%)	10,462 (+20%)	8,699 (+14%)
Requests from BDL Patrons for Items at Other MeLCat Libraries, Actually Fulfilled	591	2,293 (-6%)	6,981 (+52%)	4,599 (-53%)	9,873 (+1%)	9,777 (+20%)	8,169 (+15%)
Requests from Other MeLCat Libraries for Items at BDL	505	2,157 (+3%)	6,067 (+49%)	4,067 (-52%)	8,405 (-18%)	10,296 (+29%)	7,994 (+13%)
Requests from Other MeLCat Libraries for Items at BDL, Actually Fulfilled	495	2,165 (+20%)	5,712 (+80%)	3,175 (-58%)	7,582 (-23%)	9,810 (+25%)	7,867 (+11%)

Programs Held

April 2022

	BDL Monthly Total	BDL YTD	BDL Year End (Year-over-Year Change)				
			2021	2020	2019	2018	2017
Early Childhood Literacy Programs Held (Tracking since 2021)	22	84 (+140%)	116	0	0	0	0
Juvenile Programs Held	65	218 (+145%)	290 (-47%)	551 (-31%)	804 (+10%)	730 (+1%)	720 (+19%)
Young Adult Programs Held	29	116 (+241%)	131 (-5%)	138 (-55%)	304 (-10%)	338 (+41%)	239 (+47%)
Adult Programs Held	13	60 (+222%)	114 (-56%)	257 (+54%)	167 (+23%)	136 (-7%)	146 (-34%)
All-Ages Programs Held (Tracking since 2021)	5	23 (-21%)	80	0	0	0	0
Early Childhood Literacy Summer Reading Programs Held (Tracking since 2021)	0	0	9	0	0	0	0
Juvenile Summer Reading Events Held	0	0	96	0	173 (+52%)	114 (+20%)	95 (+7%)
Young Adult Summer Reading Events Held	0	0	25	0	61 (+24%)	49 (-14%)	57 (+97%)
Adult Summer Reading Events Held	0	0	27	0	17 (+467%)	3	0
All-Ages Summer Reading Programs Held (Tracking since 2021)	0	0	26	0	0	0	0
Computer Classes Held	6	7 (+600%)	1	1 (-99%)	81 (+305%)	20 (-9%)	22 (+57%)
TOTAL of All Programs	140	508 (+114%)	1,636 (+73%)	947 (-41%)	1,607 (+16%)	1,390 (+9%)	1,279 (+14%)

Program Attendance

April 2022

	BDL Monthly Total	BDL YTD	BDL Year End (Year-over-Year Change)				
			2021	2020	2019	2018	2017
Attendees at Early Childhood Literacy Programs (Tracking since 2021)	158	496 (-43%)	1,389	0	0	0	0
Attendees at Juvenile Programs	697	2,145 (+34%)	4,270 (-83%)	25,317 (+73%)	14,654 (-7%)	15,725 (+2%)	15,351 (+48%)
Attendees at Young Adult Programs	102	518 (+81%)	817 (-75%)	3,204 (+29%)	2,489 (-23%)	3,218 (-15%)	3,806 (+276%)
Attendees at Adult Programs	108	517 (-66%)	1,971 (-88%)	16,263 (+519%)	2,627 (+33%)	1,970 (0%)	1,979 (-3%)
Attendees at All-Ages Programs (Tracking since 2021)	105	317 (-72%)	4,547	0	0	0	0
Attendees at Early Childhood Literacy Summer Reading Programs (Tracking since 2021)	0	0	146	0	0	0	0
Attendees at Juvenile Summer Reading Events	0	0	1,798	0	4,186 (+8%)	3,864 (+24%)	3,116 (-20%)
Attendees at Young Adult Summer Reading Events	0	0	181	0	279 (-16%)	333 (-50%)	671 (+127%)
Attendees at Adult Summer Reading Events	0	0	179	0	310 (+265%)	85	0
Attendees at All-Ages Summer Programs (Tracking since 2021)	0	0	730	0	0	0	0
Attendees at Computer Classes	7	8 (+700%)	1	0	26 (+30%)	20 (-5%)	21 (+75%)
TOTAL of All Program Attendance	1,177	4,001 (-26%)	16,029 (-64%)	44,784 (+82%)	24,571 (-3%)	25,215 (+1%)	24,944 (+41%)

Summer Reading Overview

April 2022

	BDL Monthly Total	BDL YTD	BDL Year End (Year-over-Year Change)				
			2021	2020	2019	2018	2017
Juveniles Signed Up for Summer Reading Program	0	0	407 (+347%)	91 (-87%)	711 (-5%)	747 (-35%)	1,153 (+19%)
Young Adults Signed up for Summer Reading Program	0	0	77 (+166%)	29 (-78%)	134 (-65%)	378 (-2%)	385 (+241%)
Adults Signed Up for Summer Reading Program	0	0	122 (+270%)	33 (-79%)	159 (-36%)	248 (+112%)	117 (+36%)
Juveniles who Completed Summer Reading Program	0	0	220 (+142%)	91 (-76%)	385 (+48%)	260 (-50%)	518 (+13%)
Young Adults who Completed Summer Reading Program	0	0	38 (+31%)	29 (-63%)	79 (-41%)	135 (-50%)	268 (+332%)
Adults who Completed Summer Reading Program	0	0	30 (-9%)	33 (-72%)	118 (-28%)	165 (+72%)	96 (+60%)
Juvenile Summer Reading Events Held	0	0	96	0	173 (+52%)	114 (+20%)	95 (+7%)
Young Adult Summer Reading Events Held	0	0	25	0	61 (+24%)	49 (-14%)	57 (+97%)
Adult Summer Reading Events Held	0	0	27	0	17 (+467%)	3	0
Attendees at Juvenile Summer Reading Events	0	0	1,798	0	4,186 (+8%)	3,864 (+24%)	3,116 (-20%)
Attendees at Young Adult Summer Reading Events	0	0	181	0	279 (-16%)	333 (-50%)	671 (+127%)
Attendees at Adult Summer Reading Events	0	0	179	0	310 (+265%)	85	0

Summer Reading Program Signups

April 2022

	BDL Monthly Total	BDL YTD	BDL Year End (Year-over-Year Change)				
			2021	2020	2019	2018	2017
Juveniles Signed Up for Summer Reading Program	0	0	407 (+347%)	91 (-87%)	711 (-5%)	747 (-35%)	1,153 (+19%)
Young Adults Signed up for Summer Reading Program	0	0	77 (+166%)	29 (-78%)	134 (-65%)	378 (-2%)	385 (+241%)
Adults Signed Up for Summer Reading Program	0	0	122 (+270%)	33 (-79%)	159 (-36%)	248 (+112%)	117 (+36%)
TOTAL Summer Reading Program Signups	0	0	606 (+296%)	153 (-85%)	1,004 (-27%)	1,373 (-17%)	1,655 (+42%)

Summer Reading Program Completions

April 2022

	BDL Monthly Total	BDL YTD	BDL Year End (Year-over-Year Change)				
			2021	2020	2019	2018	2017
Juveniles who Completed Summer Reading Program	0	0	220 (+142%)	91 (-76%)	385 (+48%)	260 (-50%)	518 (+13%)
Young Adults who Completed Summer Reading Program	0	0	38 (+31%)	29 (-63%)	79 (-41%)	135 (-50%)	268 (+332%)
Adults who Completed Summer Reading Program	0	0	30 (-9%)	33 (-72%)	118 (-28%)	165 (+72%)	96 (+60%)
TOTAL Summer Reading Program Completions	0	0	288 (+88%)	153 (-74%)	582 (+4%)	560 (-37%)	882 (+52%)

Library-Provided Computer Services

April 2022

	BDL Monthly Total	BDL YTD	BDL Year End (Year-over-Year Change)				
			2021	2020	2019	2018	2017
One-hour sessions on Library Wifi	21,485	96,199 (+0%)	290,877 (+2%)	284,892 (-40%)	474,750 (+2%)	465,219 (+9%)	425,714 (+4%)
Desktop, Laptop, and Tablet Computers Available for Public Use	92		92 (+5%)	88	88 (-1%)	89 (+22%)	73
Sessions on Library-Provided Computers	1,336	4,578 (+138%)	11,926 (+24%)	9,604 (-73%)	35,720 (-22%)	45,687 (+3%)	44,181 (+6%)
Hours Library-Provided Computers Used (Tracking Since 2018)	815.07	2,852.01 (+183%)	6,735.18 (+12%)	6,031.58 (-75%)	24,280.36 (-2%)	24,701.55	0.00
Desktop, Laptop, and Tablet Computers Available for Staff Use	54		55 (+6%)	52	52 (+4%)	50 (+22%)	41

Website Stats

April 2022

	BDL Monthly Total	BDL YTD	BDL Year End (Year-over-Year Change)				
			2021	2020	2019	2018	2017
Monthly Website Sessions	3,950	14,584 (+3%)	46,481 (+12%)	41,586 (-28%)	58,161 (+28%)	45,594 (-38%)	73,326 (-2%)
Monthly Website Page Views	7,381	28,624 (-4%)	116,164 (+26%)	92,094 (-29%)	129,778 (+9%)	118,634 (-33%)	177,799 (-2%)

Faxes, Prints, and Sales

April 2022

	BDL Monthly Total	BDL YTD	BDL Year End (Year-over-Year Change)				
			2021	2020	2019	2018	2017
Fax Pages Received	15	18 (-65%)	141 (-5%)	149 (-57%)	350 (-16%)	419 (+61%)	260 (+19%)
Fax Pages Sent	627	2,350 (+21%)	6,515 (+66%)	3,935 (-59%)	9,524 (+3%)	9,249 (+138%)	3,879 (+123%)
Free Prints for Job Seekers, Students, etc.	1,497	6,739 (+2,424%)	3,222 (+195%)	1,091 (-61%)	2,796 (-23%)	3,631 (+16%)	3,128 (+9%)
Black and White Patron Prints (Tracking Since 6/2016)	5,732	19,013 (+11%)	55,206 (+66%)	33,177 (-56%)	75,818 (-6%)	81,016 (+7%)	75,606 (+113%)
Color Patron Prints (Tracking Since 6/2016)	711	2,716 (+24%)	9,731 (+107%)	4,709 (-58%)	11,299 (-8%)	12,285 (+20%)	10,253 (+154%)
Flash Drives Sold (Tracking Since 6/2016)	4	14 (+600%)	16 (-11%)	18 (-51%)	37 (-10%)	41 (-27%)	56 (+4%)
Earbuds Sold (Tracking Since 6/2016)	22	56 (+211%)	122 (-7%)	131 (-72%)	462 (-14%)	538 (+29%)	416 (+151%)

Fines and Fees

Overdue Fines Dropped in 2017

April 2022

	BDL Monthly Total	BDL YTD	BDL Year End (Year-over-Year Change)				
			2021	2020	2019	2018	2017
Fines and Fees Payments Received	\$ 179.71	\$ 644.87 (+11%)	\$ 1,409.59 (-18%)	\$ 1,717.01 (-44%)	\$ 3,092.62 (+28%)	\$ 2,412.73 (-68%)	\$ 7,628.31 (-24%)
Outstanding Fines and Fees	\$ 10,709.89		8,576.40 (-84%)	53,362.56 (-4%)	55,588.42 (0%)	55,850.27 (-34%)	84,232.33 (-63%)

Debt Collections

Unique Management Services, Inc.
Tracking Since 2014

April 2022

	BDL Monthly Total	BDL YTD	BDL Year End (Year-over-Year Change)				
			2021	2020	2019	2018	2017
Fine Payments as a Result of Collection Agency's Efforts	\$ 0.00	\$ 0.00	\$ 0.00	\$ 0.00	\$ 268.00 (-94%)	\$ 4,183.45 (+1,727%)	\$ 229.00 (-76%)
Library Materials Returned as a Result of Collection Agency's Efforts	\$ 0.00	\$ 0.00	\$ 0.00	\$ 0.00	\$ 0.00	\$ 462.00 (-48%)	\$ 888.95 (-33%)
What We Paid Collection Agency for Their Services	\$ 0.00	\$ 0.00	\$ 0.00	\$ 0.00	\$ 134.10 (-75%)	\$ 528.66 (-5%)	\$ 558.08 (-45%)

Value to Our Service Area

Visit <https://www.BranchDistrictLibrary.org/value>
to learn how we determine these numbers.

April 2022

	BDL Monthly Total	BDL YTD	BDL Year End (Year-over-Year Change)				
			2021	2020	2019	2018	2017
Value from Physical Item Checkouts	\$ 103,298.10	\$ 420,070.58 (+44%)	\$ 1,048,840.66 (+27%)	\$ 822,979.52 (-53%)	\$ 1,755,554.08 (-7%)	\$ 1,888,907.75 (-12%)	\$ 2,135,671.28 (+0%)
Value from Attending Programs (Tracking Since 1/2018)	\$ 8,785.00	\$ 27,881.00 (+4%)	\$ 78,390.00 (-38%)	\$ 126,690.00 (+7%)	\$ 118,485.00 (-6%)	\$ 125,795.00	\$ 0.00
Value from Fax Service (Tracking Since 1/2018)	\$ 642.00	\$ 2,071.00 (+4%)	\$ 6,534.00 (+61%)	\$ 4,056.00 (-60%)	\$ 10,205.00 (+6%)	\$ 9,668.00	\$ 0.00
Value from Free Prints (Tracking Since 1/2018)	\$ 225	\$ 868 (+2,182%)	\$ 443 (+173%)	\$ 163 (-61%)	\$ 419 (-23%)	\$ 545	\$ 0
Value from Notary Services (Tracking Since 1/2018)	\$ 50.00	\$ 155.00 (+288%)	\$ 320.00 (+42%)	\$ 225.00 (-53%)	\$ 475.00 (+44%)	\$ 330.00	\$ 0.00
Value from Digital Services (Tracking Since 1/2018)	\$ 12,290.00	\$ 51,800.00 (+17%)	\$ 145,136.00 (+5%)	\$ 138,316.00 (+2%)	\$ 135,824.00 (+7%)	\$ 127,476.00	\$ 0.00
Value from Using Library Computers (Tracking Since 1/2018)	\$ 2,445.21	\$ 8,556.03 (+183%)	\$ 20,205.54 (+12%)	\$ 18,094.74 (-75%)	\$ 72,841.08 (-2%)	\$ 74,104.66	\$ 0.00
Value from Using Library Wifi (Tracking Since 1/2018)	\$ 2,148.50	\$ 7,769.90 (+16%)	\$ 17,897.18 (-10%)	\$ 19,942.44 (-40%)	\$ 33,232.50 (+2%)	\$ 32,565.33	\$ 0.00
TOTAL Value of Free Library Services	\$ 129,883.36	\$ 519,171.11 (+39%)	\$ 1,317,766.78 (+17%)	\$ 1,130,466.45 (-47%)	\$ 2,127,036.06 (-6%)	\$ 2,259,391.39 (+6%)	\$ 2,135,671.28 (+0%)

Materials Expenditures

Tracking since 2018

April 2022

	BDL Monthly Total	BDL YTD	BDL Year End (Year-over-Year Change)				
			2021	2020	2019	2018	2017
Amount Spent on Books	\$ 9,315.92	\$ 29,043.97 (-1%)	\$ 108,851.89 (+27%)	\$ 85,727.68 (+12%)	\$ 76,878.30 (-18%)	\$ 93,763.50	\$ 0.00
Amount Spent on Periodicals	\$ 0.00	\$ 347.72 (-39%)	\$ 5,051.01 (-6%)	\$ 5,390.61 (-5%)	\$ 5,663.99 (-20%)	\$ 7,085.59	\$ 0.00
Amount Spent on Audiovisual Materials	\$ 967.44	\$ 3,944.49 (-25%)	\$ 23,646.40 (+39%)	\$ 16,992.04 (+13%)	\$ 15,009.96 (-17%)	\$ 17,998.47	\$ 0.00
Amount Spent on Digital Resources	\$ 2,093.82	\$ 11,050.76 (-24%)	\$ 42,439.73 (+34%)	\$ 31,708.66 (+12%)	\$ 28,412.62 (-35%)	\$ 43,798.90	\$ 0.00
TOTAL Spent on All Library Materials	\$ 12,377.18	\$ 44,386.94 (-11%)	\$ 179,989.03 (+29%)	\$ 139,818.99 (+11%)	\$ 125,964.87 (-23%)	\$ 162,646.46	\$ 0.00

Other Expenditures

Tracking since 2018

April 2022

	BDL Monthly Total	BDL YTD	BDL Year End (Year-over-Year Change)				
			2021	2020	2019	2018	2017
Total Materials Expenditures	\$ 12,377.18	\$ 44,386.94 (-11%)	\$ 179,989.03 (+29%)	\$ 139,818.99 (+11%)	\$ 125,964.87 (-23%)	\$ 162,646.46	\$ 0.00
Total Staff Expenditures	\$ 148,842.33	\$ 376,489.89 (+5%)	\$ 963,961.23 (+1%)	\$ 956,326.38 (-18%)	\$ 1,172,756.92 (-20%)	\$ 1,469,560.33	\$ 0.00
Expenditures in other categories	\$ 49,423.06	\$ 315,923.34 (+36%)	\$ 860,839.79 (+78%)	\$ 483,894.79 (+37%)	\$ 353,231.25 (-16%)	\$ 422,747.74	\$ 0.00
TOTAL Expenditures in all Categories	\$ 198,270.39	\$ 680,432.08 (+8%)	\$ 1,865,487.82 (+3%)	\$ 1,819,492.24 (+1%)	\$ 1,797,240.67 (-13%)	\$ 2,054,954.53	\$ 0.00

Staffing

April 2022

	BDL Monthly Total	BDL YTD	BDL Year End (Year-over-Year Change)				
			2021	2020	2019	2018	2017
Total BDL Staff	37	36 (avg) (+3%)	35 (avg) (-3%)	36 (avg) (-3%)	37 (avg) (-8%)	40 (avg) (+5%)	37 (avg) (+9%)
BDL Staff with MLS Degree	5	5 (avg)	5 (avg)	5 (avg) (+25%)	5 (avg) (-33%)	6 (avg) (+20%)	5 (avg) (+150%)
Worked Full-Time Equivalents	24.88	23.59 (avg) (-4%)	21.71 (avg) (-13%)	24.53 (avg) (-4%)	25.78 (avg) (-4%)	26.92 (avg) (+8%)	24.91 (avg) (+41%)
Hours of Specialized Training for Staff (Tracking Since 1/2019)	13	200 (-34%)	763 (-35%)	1,170 (+119%)	534	0	0
Hours Volunteers Worked at the Library (Tracking Since 1/2019)	38	126 (+85%)	128 (+228%)	39 (-96%)	1,065	0	0

Outreach Services

Began 2018

April 2022

	BDL Monthly Total	BDL YTD	BDL Year End (Year-over-Year Change)				
			2021	2020	2019	2018	2017
Number of Patrons Served by Outreach Services	11	52 (-20%)	120 (+186%)	42 (-40%)	70 (-8%)	76 (+2,433%)	3
Number of Items Delivered to Outreach Patrons	38	193 (-29%)	548 (+126%)	242 (+10%)	220 (-64%)	606 (+2,231%)	26

Coldwater Branch Heritage Room

Stats part of Coldwater Branch totals above; shown here for convenience.

April 2022

	Heritage Room	BDL YTD	BDL Year End (Year-over-Year Change)				
			2021	2020	2019	2018	2017
Heritage Room Attendance	40	131 (+285%)	202 (+92%)	105 (-78%)	484 (-34%)	736 (+12%)	658 (-7%)
In-Person Reference Questions	18	40 (+471%)	74 (-8%)	80 (-81%)	412 (-42%)	708 (+29%)	550 (+664%)
Reference Telephone Calls	9	37 (+3%)	115 (+92%)	60 (-74%)	232 (-16%)	277 (-36%)	433 (+15%)
Online Reference Questions	0	3 (-79%)	42 (+24%)	34 (-48%)	65 (+8%)	60 (-5%)	63 (-24%)

Coldwater Branch Kids' Place

Stats part of Coldwater Branch totals above; shown here for convenience.

Tracking separately since April 2019.

April 2022

	Kids' Place	BDL YTD	BDL Year End (Year-over-Year Change)				
			2021	2020	2019	2018	2017
Kids' Place Attendance	760	2,571 (+329%)	4,445 (+86%)	2,385 (-75%)	9,710	0	0
In-Person Reference Questions	124	440 (+150%)	740 (+227%)	226 (-61%)	575	0	0
Reference Telephone Calls	14	64 (-16%)	214 (+37%)	156 (-30%)	224	0	0
Online Reference Questions	0	0	2	0	0	0	0

Coldwater Branch Teen Space

Stats part of Coldwater Branch totals above; shown here for convenience.

Tracking separately since April 2019.

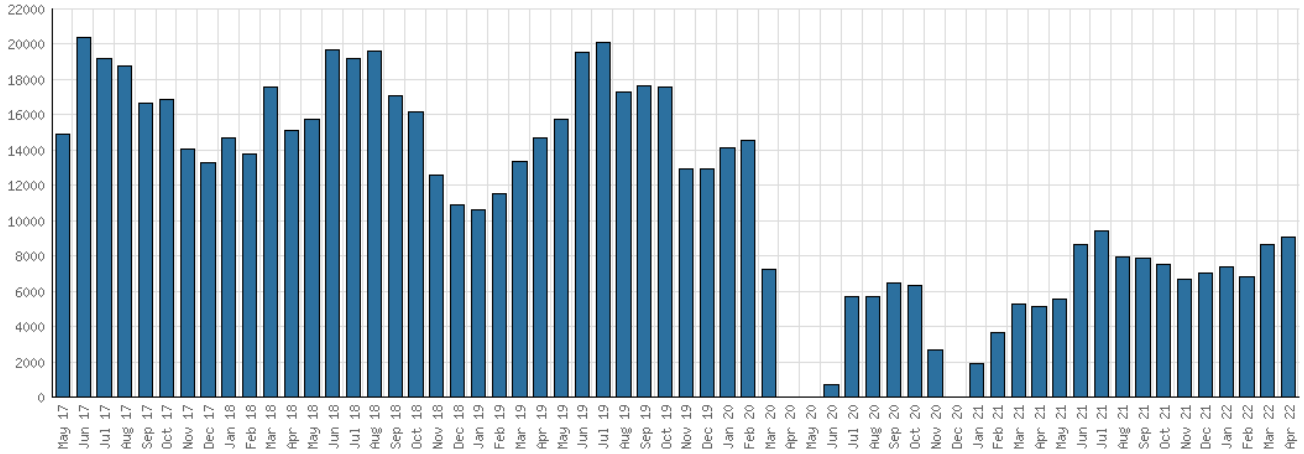
April 2022

	Teen Space	BDL YTD	BDL Year End (Year-over-Year Change)				
			2021	2020	2019	2018	2017
Teen Space Attendance	199	516 (+176%)	706 (-16%)	845 (-80%)	4,172	0	0
In-Person Reference Questions	6	28	13 (+225%)	4 (-96%)	93	0	0
Reference Telephone Calls	0	0	0	0	0	0	0
Online Reference Questions	0	0	0	0	0	0	0

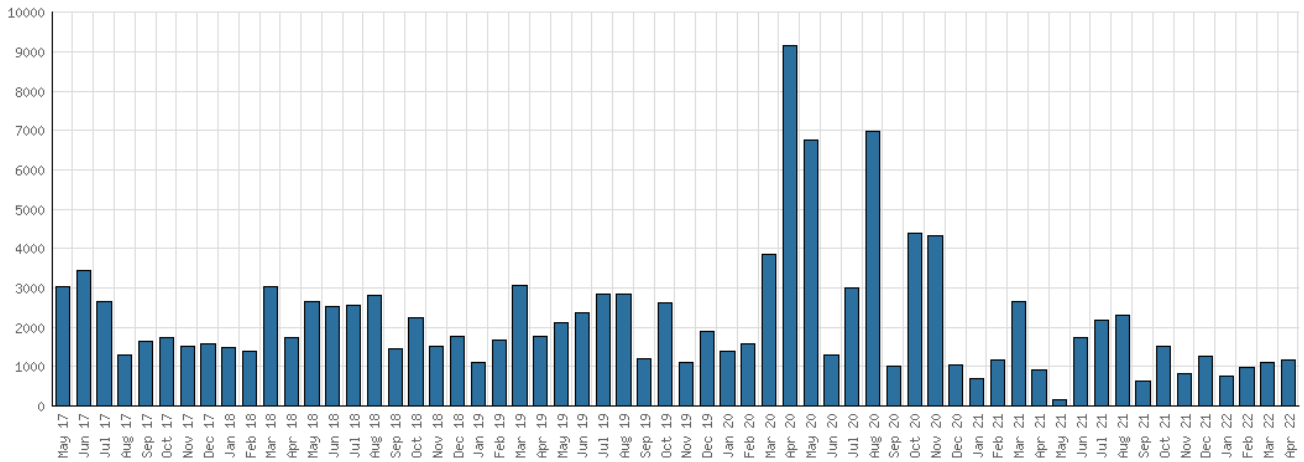
Selected Graphs

5-year Monthly Trends

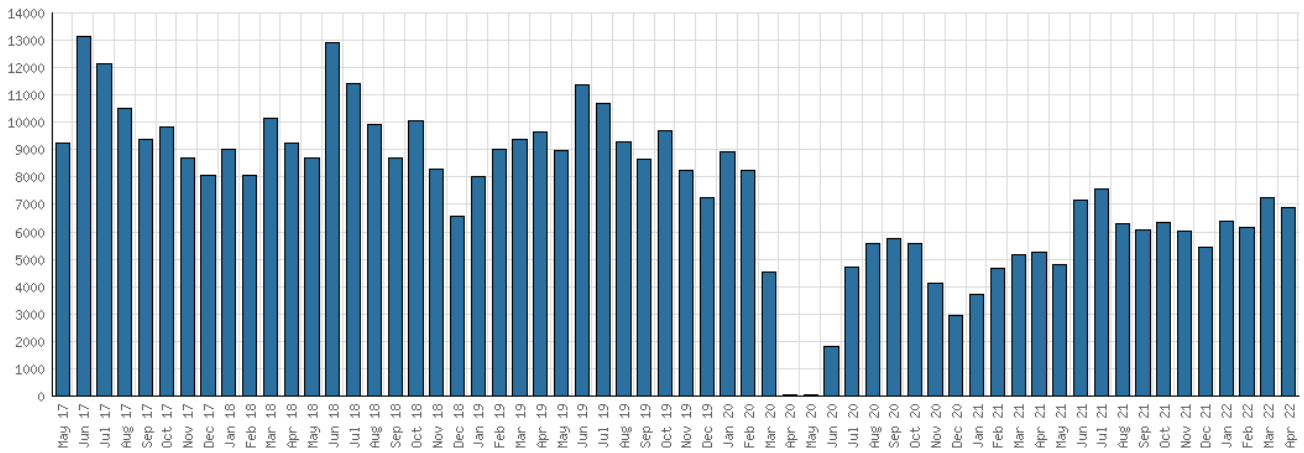
District Attendance



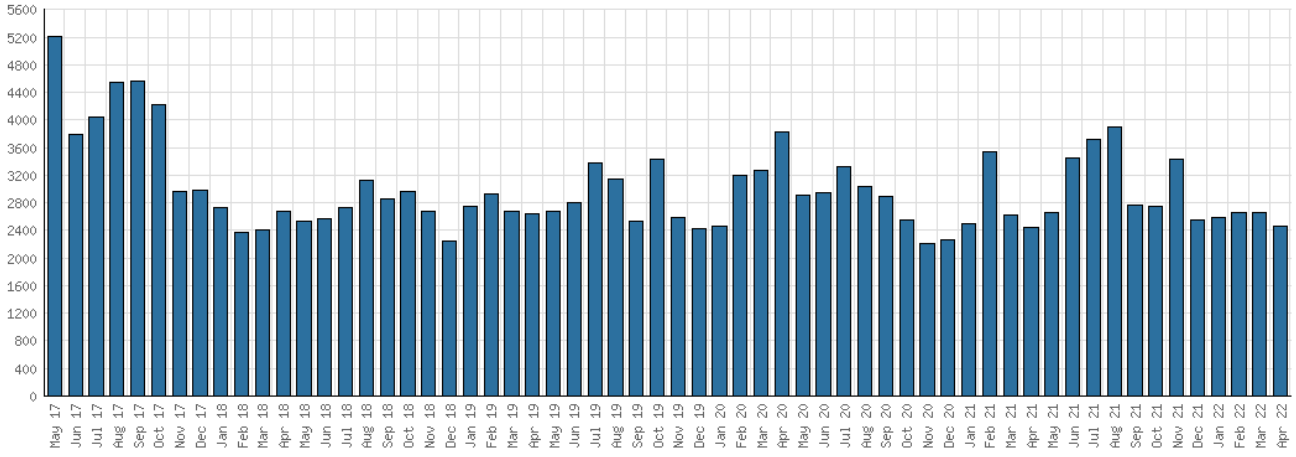
District Program Attendance



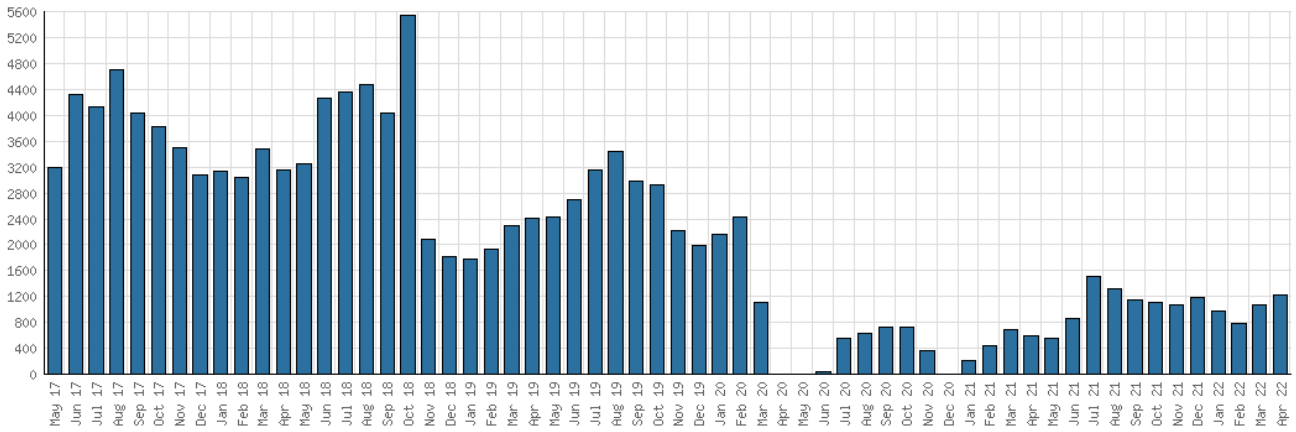
District Physical Checkouts



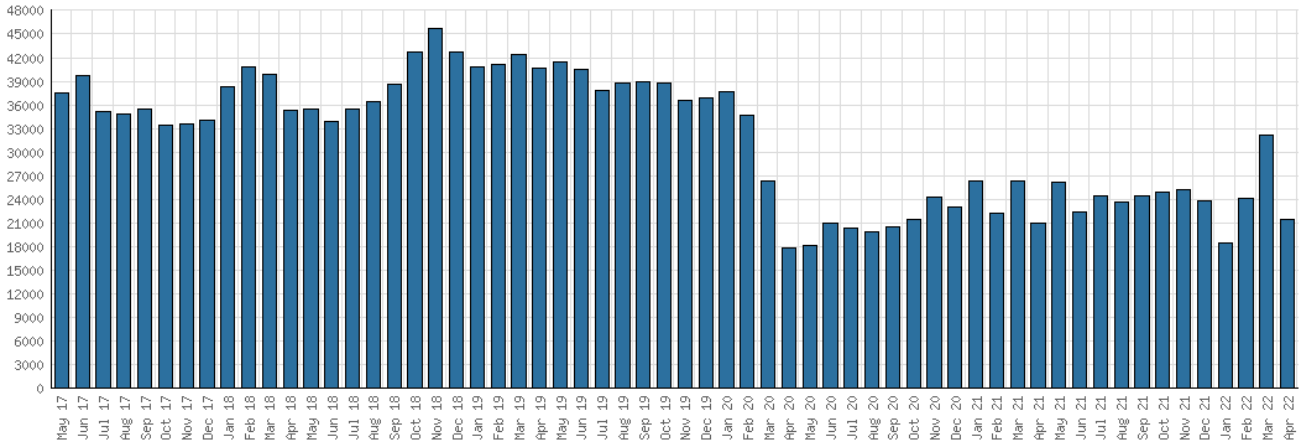
District Digital Usage



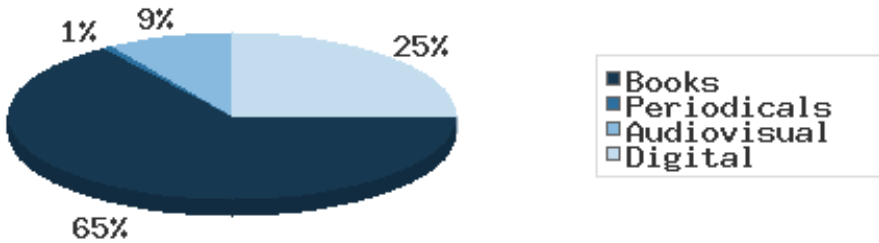
District Use of Library-Provided Computers



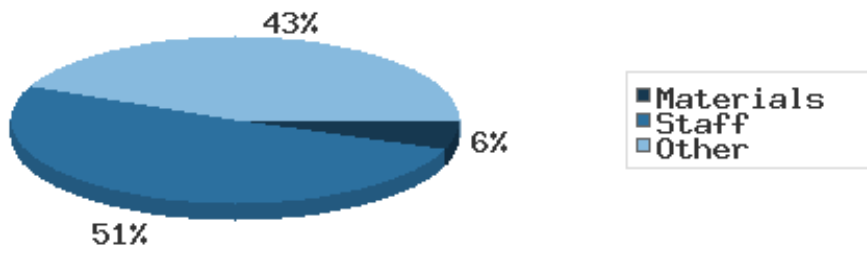
District One-Hour Sessions on Library Wifi



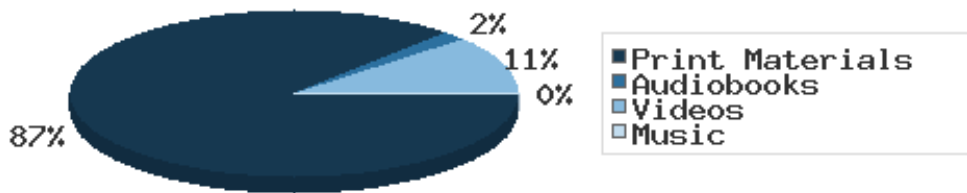
Year-to-Date Materials Expenditures



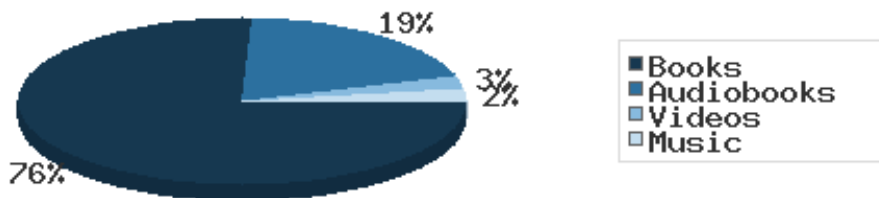
YTD Expenditures in all Categories



Physical Collection



Digital Collection



YTD Usage Breakdown of Digital Services

